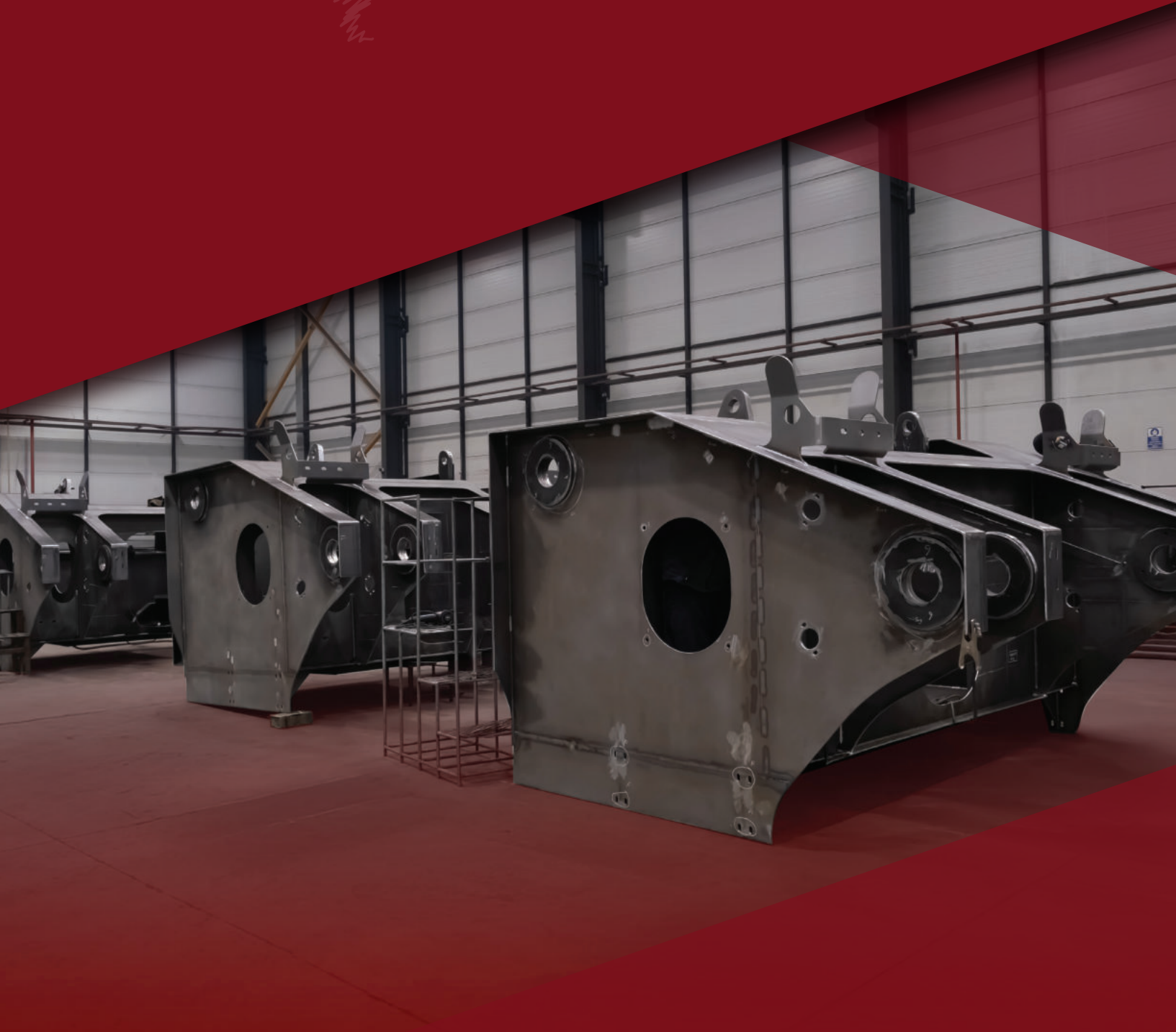


Gilgenci

Where your design meets manufacturing expertise

"Since 1954"

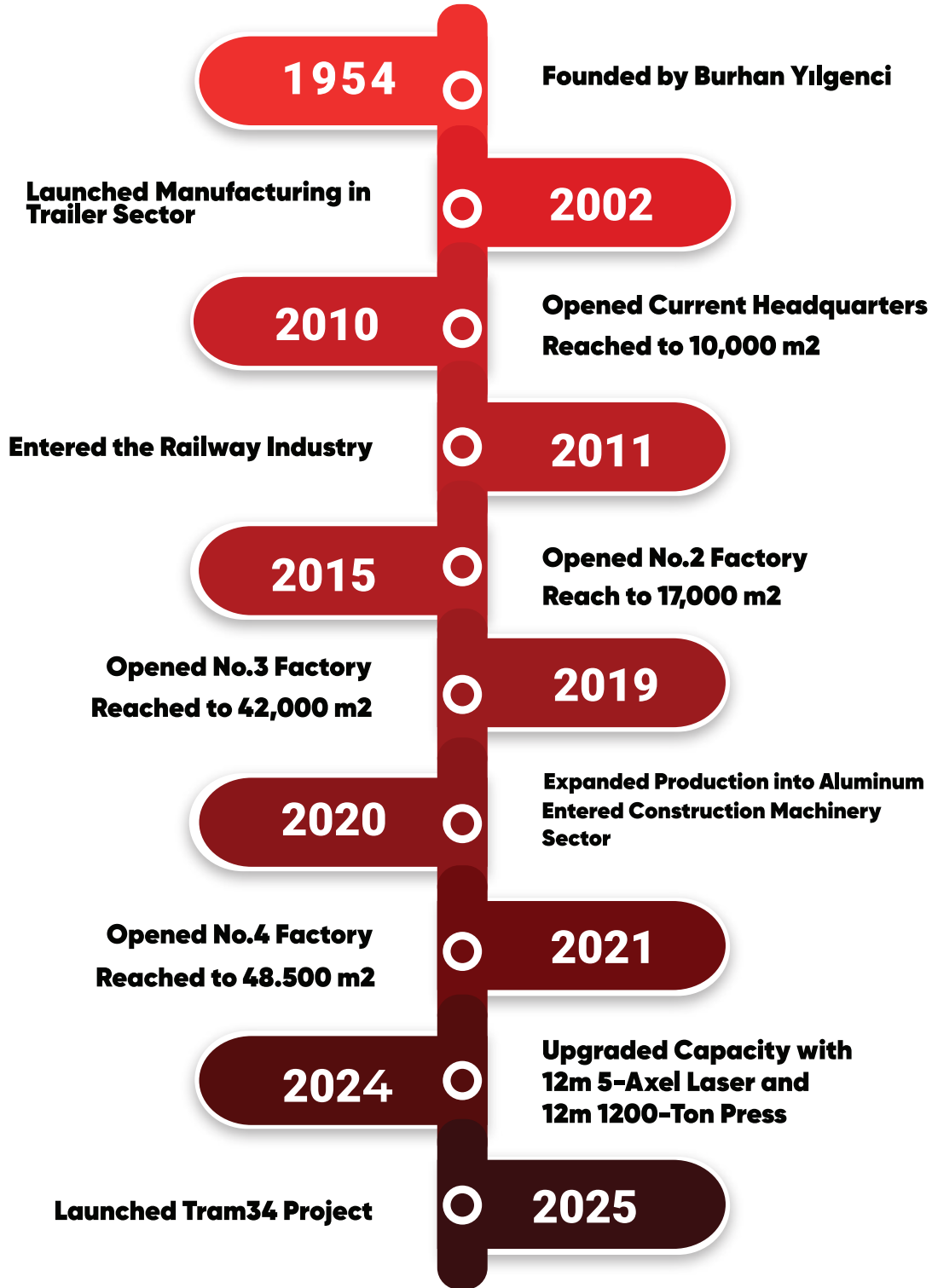




CONTENTS

History of Yilgenci	01
Production Plants	02
Machinery Overview	09
Workforce breakdown	10
Quality Certificates	16
Sustainability	19
Product Range	20

HISTORY OF YILGENCI MANUFACTURING



PRODUCTION
PLANTS



6.500 m²

Y-4 Trailer Factory

10.000 m²

Y-1 Stock Area
(Net: 5.600 m²)

25.000 m²

Y-3 Production Factory

7.000 m²

Y-2 Paint Shop
(Net: 4.000 m²)

Total Area: **48.500 m²**

Always better with
Yilgenci quality



HEADQUARTER AND
TRADE FACTORY
Y1





**SHOT BLUSTING &
PRE-PAINT MACHINE**



**RAW MATERIAL
STOCK AREA**

05



**PAINT SHOP
FACTORY
Y2**



**TRAILER
FACTORY
Y4**



**PRODUCTION
FACTORY
Y3
06**

WHY PARTNER WITH YILGENCI?



INNOVATION

We pioneer with technology, advancing production with our new paint shop, 12-meter 5-axis laser, and 12-meter CNC press.



QUALITY

15 quality inspectors and 10 welding engineers ensure excellence with high-tech tools.



PASSION

Our family heritage drives us to work with integrity and dedication.



SUSTAINABILITY

We promote eco-friendly practices for local and global impact.



ALL UNDER ONE ROOF

From design to production, quality control to painting, we manage every process in a single company, saving you time and boosting quality.



SERVICES

Engineering Solutions

R&D

Fixture Designing

Laser Cutting

Bending

Pressing

Milling

Welding

Machining

Assembly

Painting



MACHINERY OVERVIEW

Laser Cutting Machines

Bending Machines

Press Machines

Milling Machines

Welding Machines

Paint Shop

Number Of Employees



LASER CUTTING **MACHINES**

MACHINE	PRODUCTION YEAR
Laser (SPGEAR 510)	2004
Laser (FIBER) 6000mm	2014
Oxy Plazma Ajan	2016
Laser (FIBER) 4000mm	2017
Laser (FIBER) 8000mm	2021
Laser (FIBER) 3000mm	2024
Laser (FIBER) 5-Axis 12000mm	2025



CNC PRESS BRAKE **MACHINES**

MACHINE	PRODUCTION YEAR
175 Ton - 3 Meter	2006
320 Ton 4 Meter	2013
320 Ton 4 Meter	2013
640 Ton 8 Meter	2013
100 Ton 3 Meter	2019
400 Ton 6 Meter	2021
1200 Ton 12 Meter	2025



MILLING MACHINES

MACHINE	PRODUCTION YEAR
Band Saw	2004
Drilling	2003
Milling	2004
Grinding	2005
Lathe	2001
Milling	2000
Drilling	2006
Drilling	2012
Vertical Machining Center 1250	2017
Vertical Machining Center 1050	2019
Vertical Machining Center 1250* 3000* 6000	2019
Vertical Machining Center 1050	2022
Vertical Machining Center 1050	2022
Visionwhite 1250*2000*3000	2024



WELDING MACHINES & CRANES

MACHINE	AMOUNT
Welding Machines (350-500 amp)	78-90
TIG Welding Machine	7
Robotic Welding Machine (Q3100x12000 mm)	1
5Axis Fiber Laser Welding Machine	1
Fiber Laser Welding Machine	1
Inverter MIG Welding Machine	2
Cranes (Between 1-16 Tones)	21



SHOT BLASTING AND **PAINTING BOOTHS**

SHOT BLASTING Length 25M, Width 5M
Height 5M (Automatic sand
collection)

PAINT Length 31m, (Dividable to 2
booths - 15.5m) It's also a furnace
working with natural gas.

Special tooling on ground for
moving parts. Also, preparation
on the ceiling to hang the parts



NUMBER OF EMPLOYEES

WHITE COLLAR STAFF	NUMBER OF PEOPLE
Engineers	25 (10 of them are welding engineers)
Technicians	8
Others	21
Quality	12
Tradeship Dept	24
BLUE COLLAR STAFF	NUMBER OF PEOPLE
Workers	244
Tradeship Dept	21
TOTAL EMPLOYEES	355



| OUR QUALITY POLICY



Customer Satisfaction:

We commit to understanding and meeting customer needs.



Partner Focus:

We attentively address our partners' interests.



Technological Progress:

We pursue ongoing improvement and innovation.



Employee Development:

We continuously enhance our team's skills.

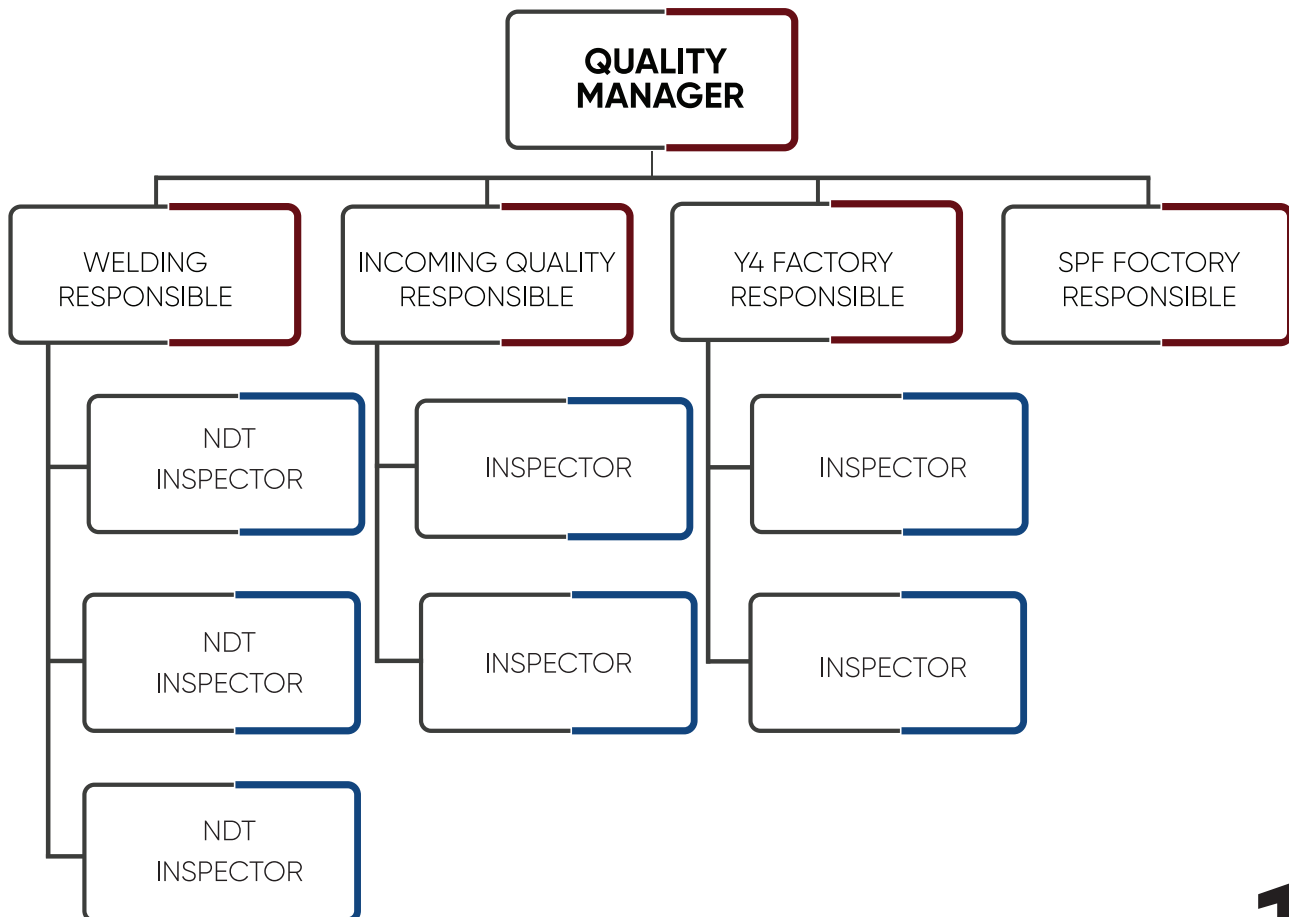


Efficient Service:

We deliver superior services through optimal resource use.



QUALITY CONTROL DEPARTMENT



OUR CERTIFICATES

We certify our years of expertise in the steel industry with our quality certificates.

TS EN ISO 9001

2015 QUALITY
MANAGEMENT
SYSTEMS STANDARDS
IN 2005

TS EN ISO 14001

(ENVIRONMENTAL
MANAGEMENT
SYSTEMS) IN 2011

EN 15085 CL1

FOR RAILWAY APPLICATION
(WELDING QUALITY
SYSTEM) N 2010

EN ISO 3834

FOR MANUFACTURING
WELDING QUALITY
MANAGEMENT SYSTEM
IN 2009

DIN 6701-A3

ADHESIVE BONDING
OF RAILWAY
VEHICLE AND PARTS

TS EN ISO 45001

(OCCUPATIONAL HEALTH
AND SAFETY MANAGEMENT
SYSTEMS-
SPECIFICATIONS) IN 2011



INSTALLED OVER 1250KW
OF ROOF SOLAR PANEL



ELECTRIFYING COMPANY
VEHICLES



REDUCING PLASTIC CONSUMPTION



IMPROVING WASTE MANAGEMENT



REDUCING THE OVERALL CARBON
FOOTPRINT EACH YEAR





OUR PRODUCT RANGE

Trailer Sector

Car Carriers

Railway Systems

Construction Machinery

Solar Power

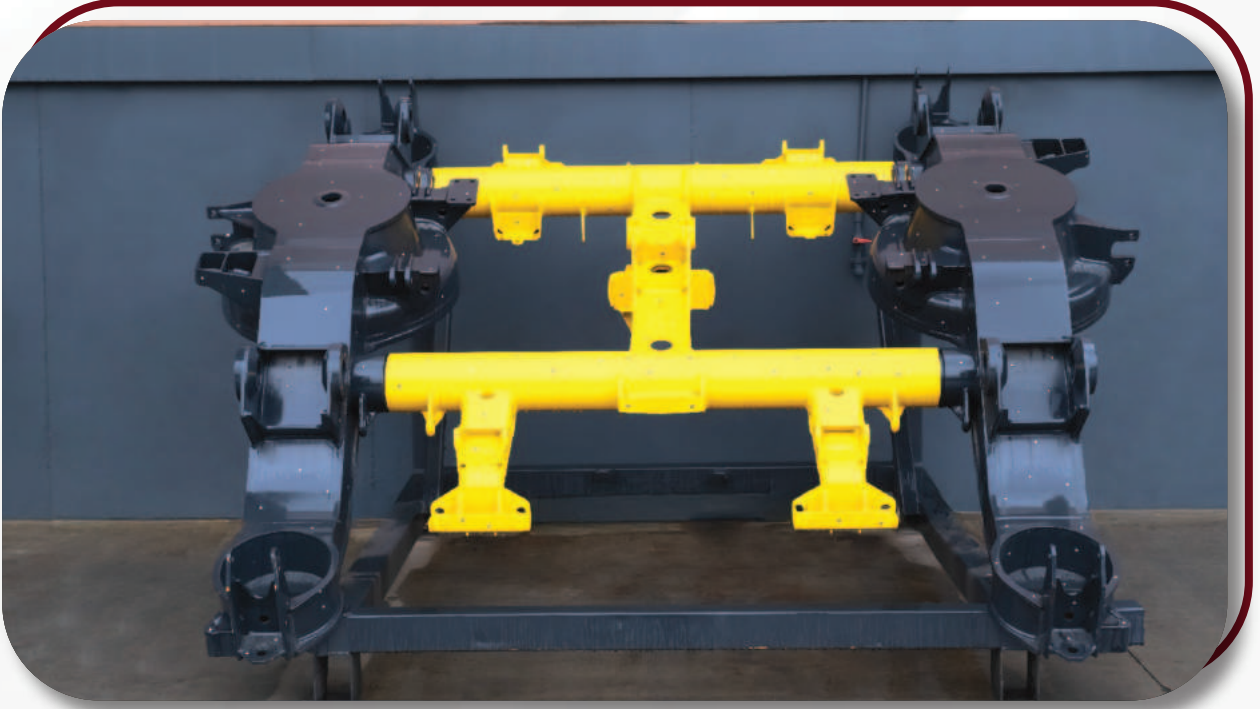
Petrol Searching Platforms

Automotive

Automated Container Vehicles



|TÜRKİYE RAILWAY



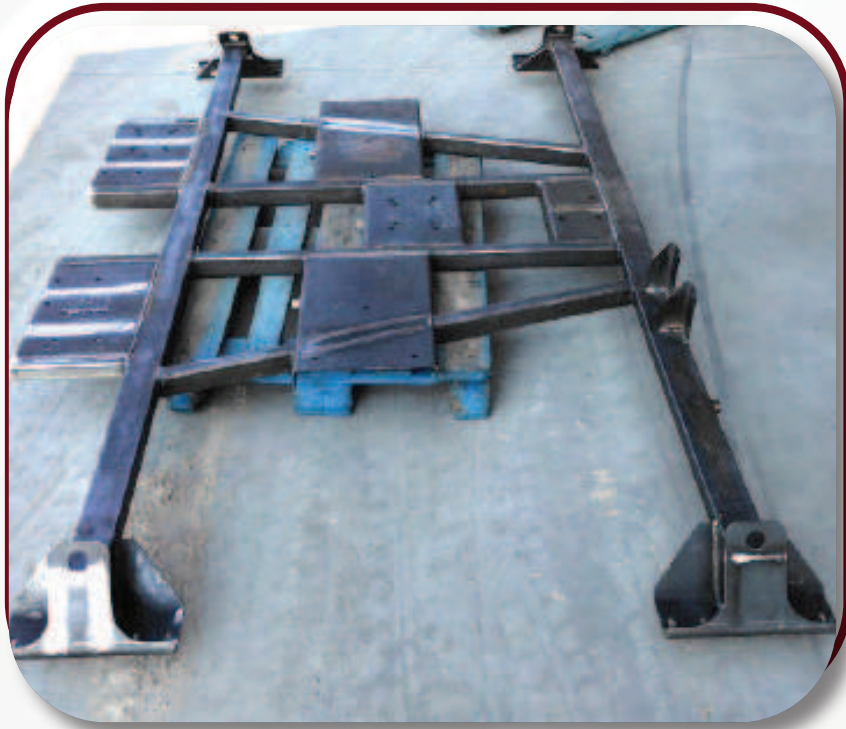
SWITZERLAND RAILWAY



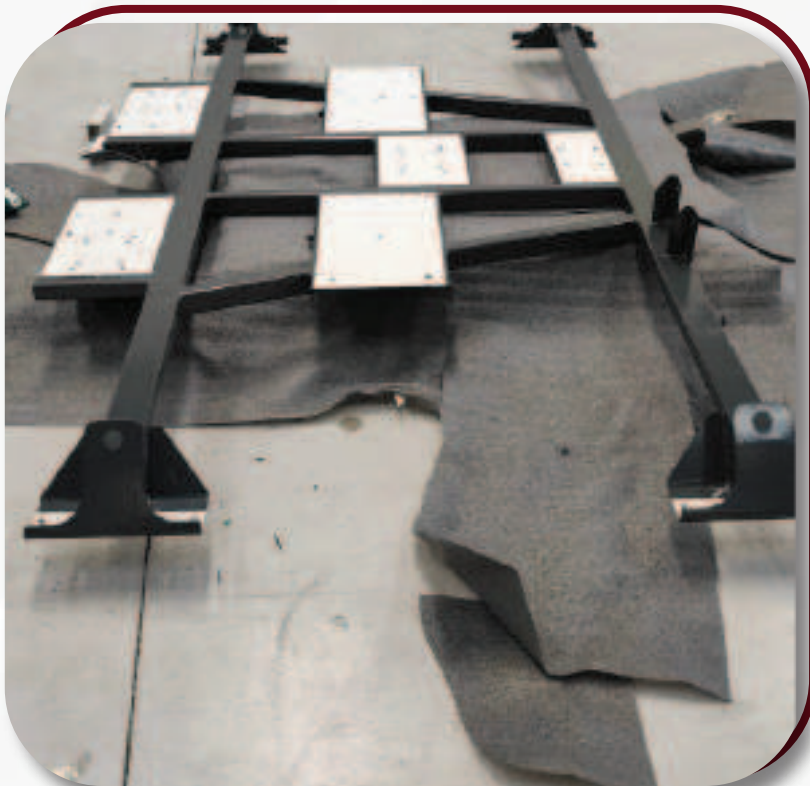
SWITZERLAND RAILWAY



SWITZERLAND RAILWAY



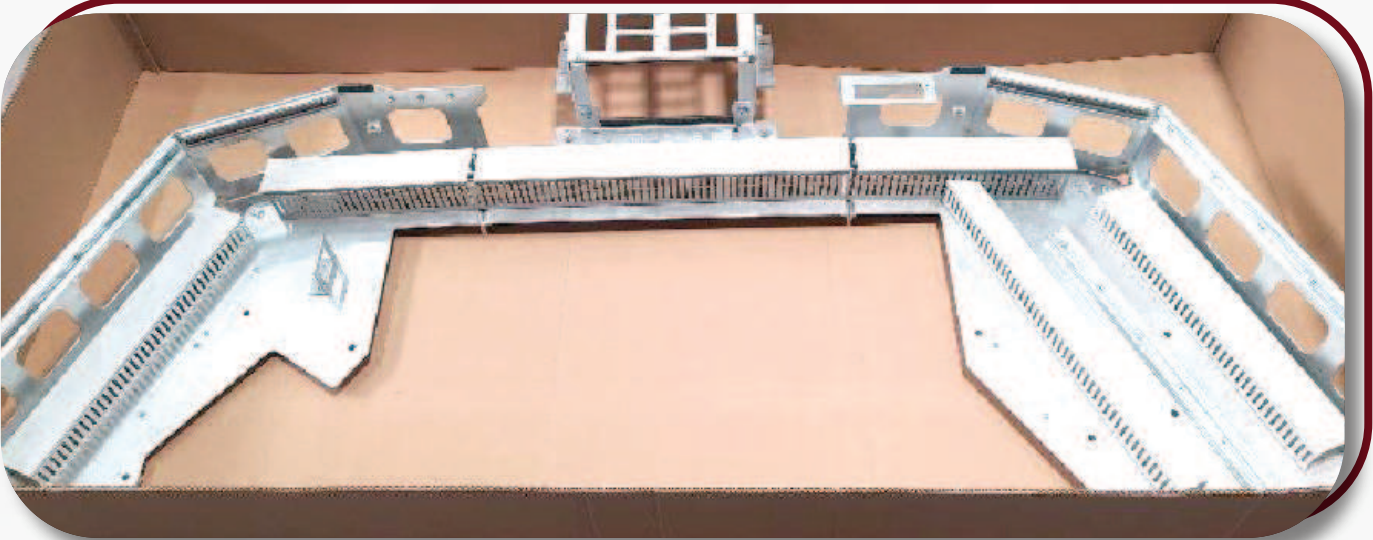
Before Paint



After Paint



SWITZERLAND RAILWAY



SWITZERLAND RAILWAY



GERMANY TRAILER PARTS



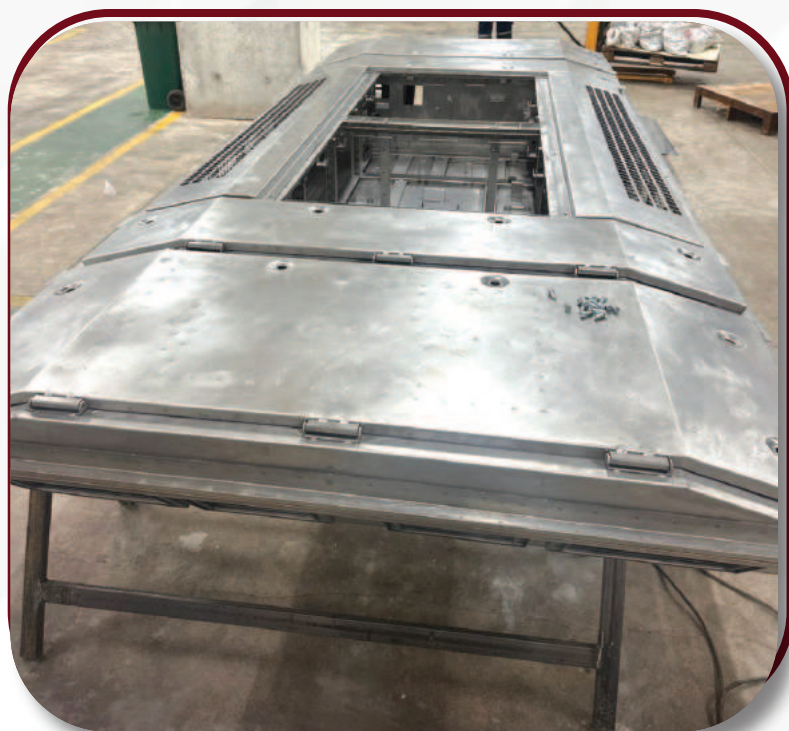
ITALY MINING MACHINERY



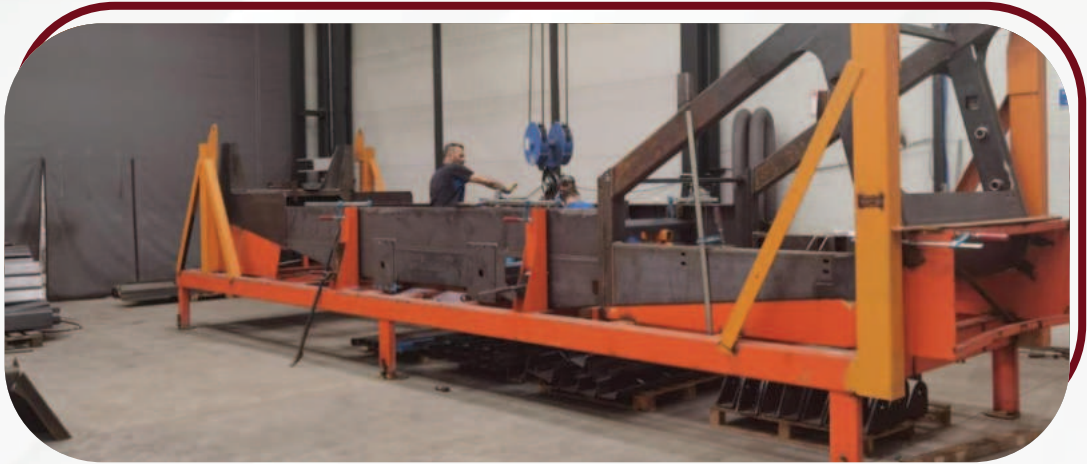
UNITED KINGDOM MINING MACHINERY



CHINA RAILWAY



UNITED KINGDOM MINING MACHINERY



FRANCE LIFE SHELTER



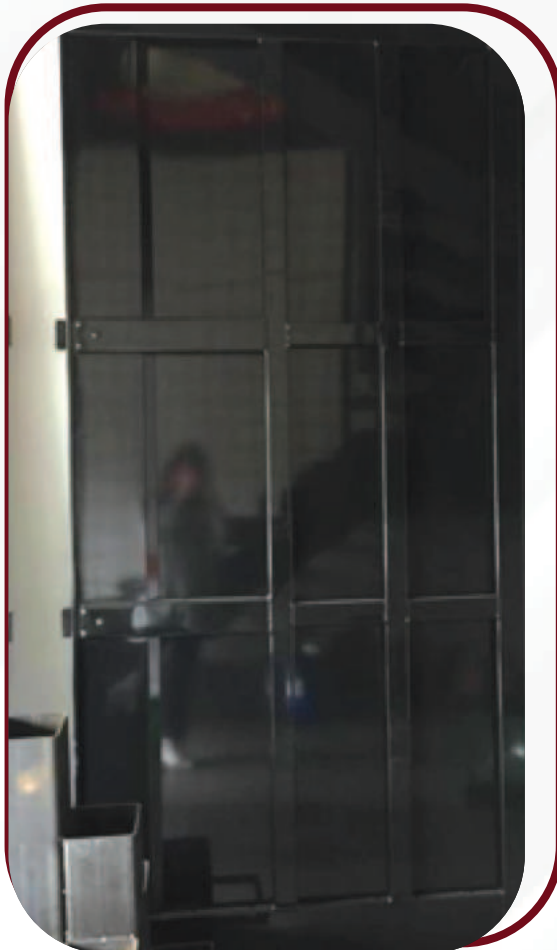
FRANCE CAR CARRIER PARTS



FRANCE CAR CARRIER PARTS



| GERMANY TRAILER PARTS





EXPORT MAP



- USA
- SWEDEN
- FINLAND
- UNITED KINGDOM
- GERMANY
- POLAND

- FRANCE
- SWITZERLAND
- CZECH REPUBLIC
- HUNGARY
- ITALY
- BULGARIA
- AUSTRIA

70
yıl



CONTACT US

☎ +90 (549) 190 98 98

✉ imalat@yilgenci.com

📍 Hanlı Sakarya Neigh. Şehit Onb. Zekeriya Gözyuman
St. Yilgenci Est. No: 1/21, Arifiye/SAKARYA
YILGENCI Ind. & Trade Inc.

Manufacturing solutions, high quality standarts

